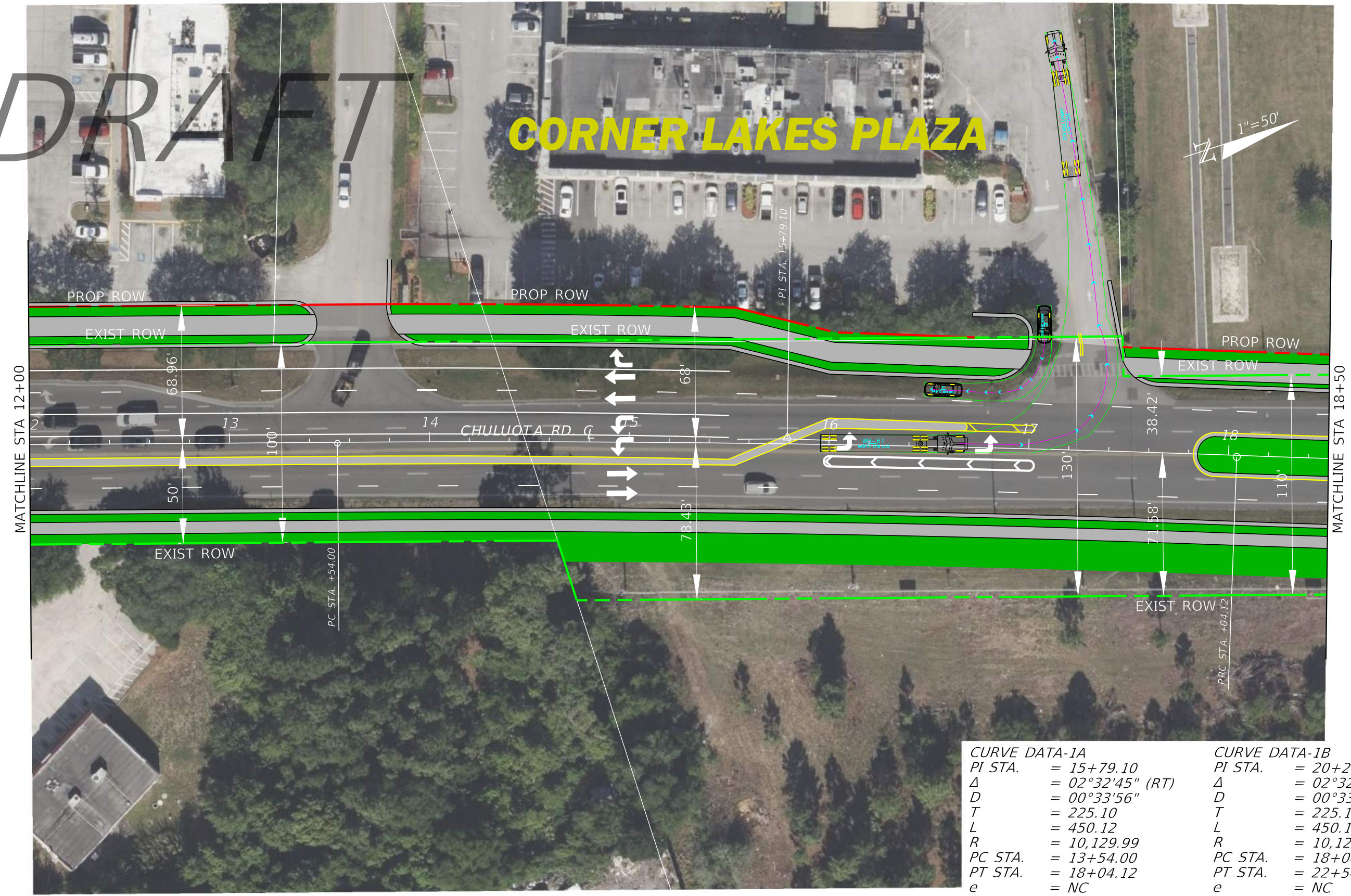


DRAFT

CORNER LAKES PLAZA



CURVE DATA-1A		CURVE DATA-1B	
PI STA.	= 15+79.10	PI STA.	= 20+29.25
Δ	= 02°32'45" (RT)	Δ	= 02°32'46" (LT)
D	= 00°33'56"	D	= 00°33'56"
T	= 225.10	T	= 225.12
L	= 450.12	L	= 450.17
R	= 10,129.99	R	= 10,129.99
PC STA.	= 13+54.00	PC STA.	= 18+04.12
PT STA.	= 18+04.12	PT STA.	= 22+54.30
e	= NC	e	= NC
DESIGN SPEED = 40MPH		DESIGN SPEED = 40MPH	

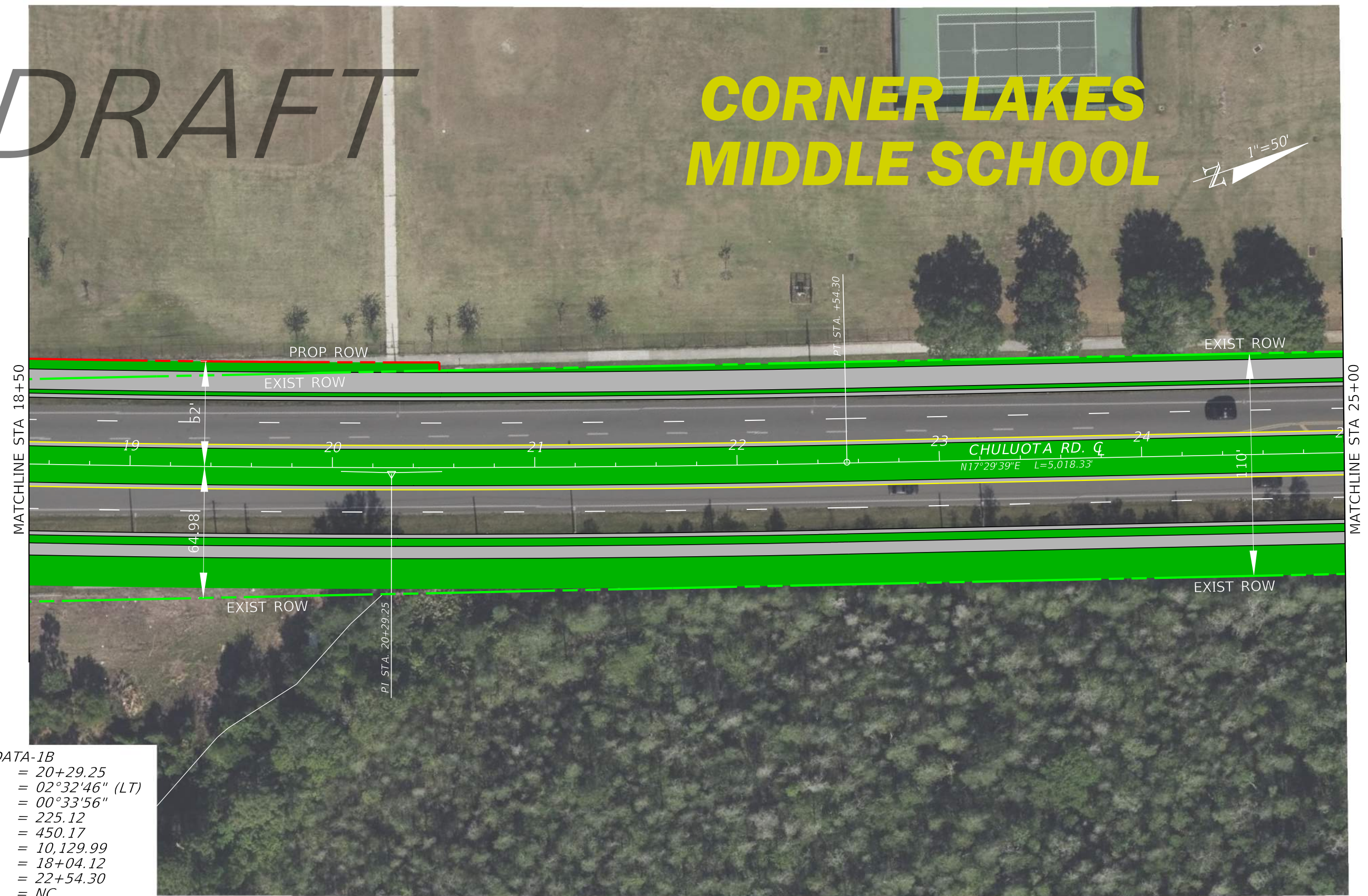
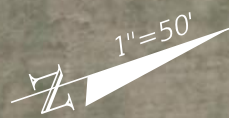
4/4/2023 2:45:02 PM salanis
 c:\pwworking\jml\0336928\GEOMETRY_Pref-ALT-2L.dgn

REVISIONS				DATE	ORANGE COUNTY PUBLIC WORKS			SHEET NO.
DATE	DESCRIPTION	DATE	DESCRIPTION		ROAD NO.	COUNTY	FINANCIAL PROJECT ID	
				4/4/2023				2

CHULUOTA RD (CR 419)
PROPOSED PREFERRED
ALIGNMENT

DRAFT

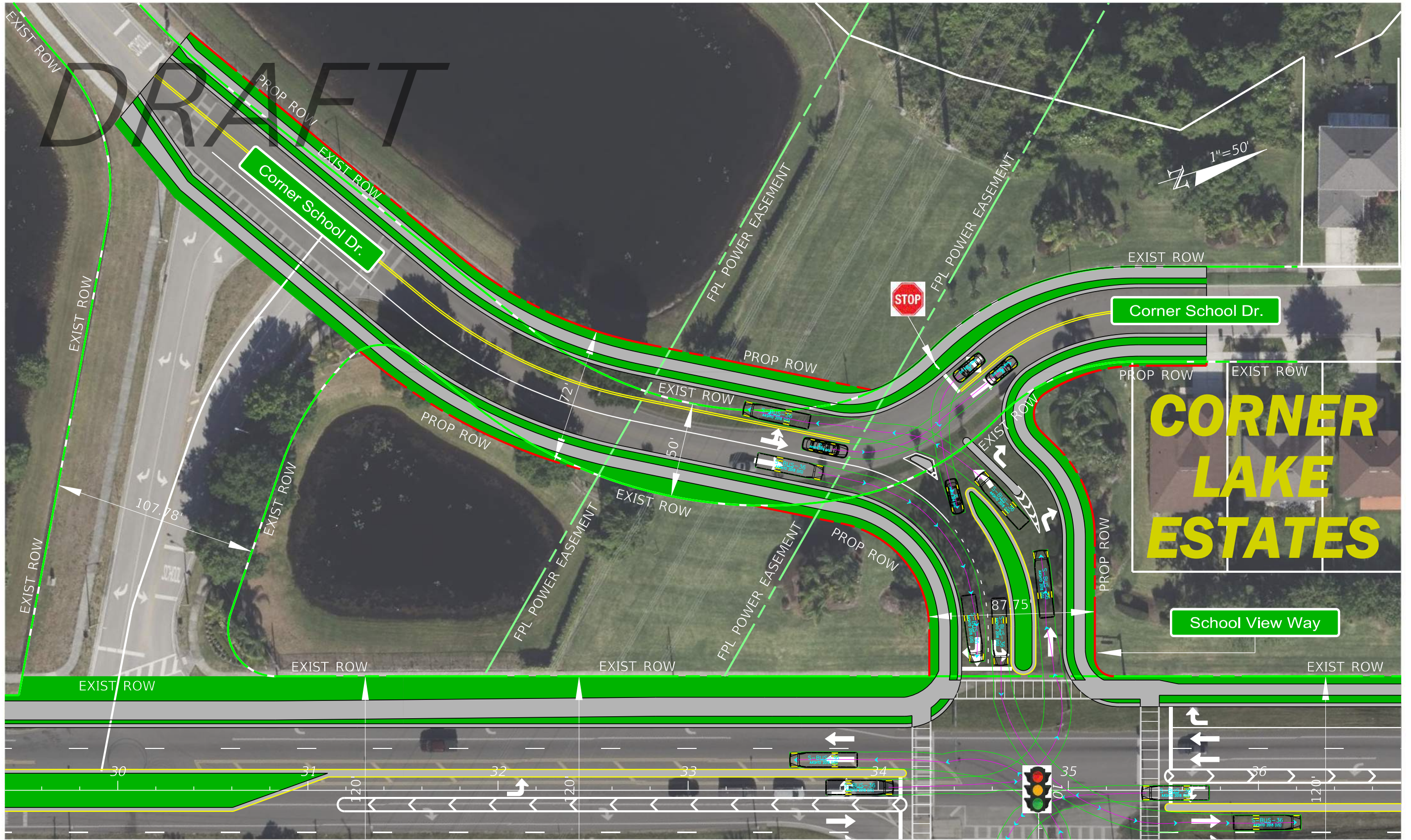
CORNER LAKES MIDDLE SCHOOL



CURVE DATA-1B
 PI STA. = 20+29.25
 Δ = 02°32'46" (LT)
 D = 00°33'56"
 T = 225.12
 L = 450.17
 R = 10,129.99
 PC STA. = 18+04.12
 PT STA. = 22+54.30
 e = NC
 DESIGN SPEED = 40MPH

4/4/2023 2:45:09 PM salanis c:\pwworking\jml\40336928\GEOMETRY_Pref-ALT-2L.dgn

REVISIONS				4/4/2023	ORANGE COUNTY PUBLIC WORKS			CHULUOTA RD (CR 419) PROPOSED PREFERRED ALIGNMENT	SHEET NO.
DATE	DESCRIPTION	DATE	DESCRIPTION		ROAD NO.	COUNTY	FINANCIAL PROJECT ID		3



4/4/2023 2:45:16 PM salanis
 c:\pwworking\jmt\40336928\GEOMETRY_Pref-ALT-2L.dgn

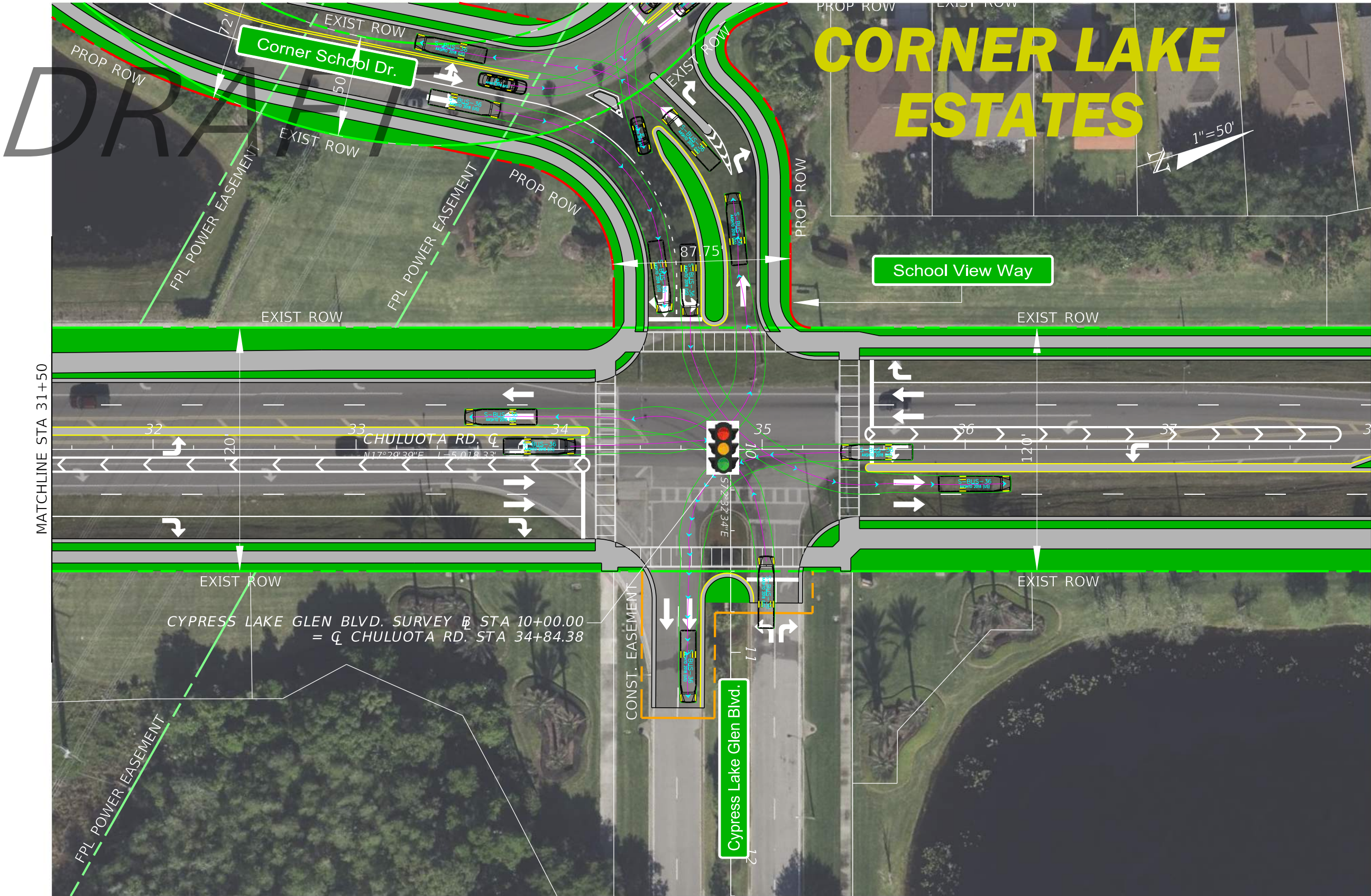
REVISIONS	
DATE	DESCRIPTION

4/4/2023

ORANGE COUNTY PUBLIC WORKS		
ROAD NO.	COUNTY	FINANCIAL PROJECT ID

CHULUOTA RD (CR 419)
PROPOSED PREFERRED
ALIGNMENT

SHEET NO.
4A



4/4/2023 2:45:27 PM salanis
 c:\pwworking\jmi\40336928\GEOMETRY_Pref-ALT-2L.dgn

REVISIONS			
DATE	DESCRIPTION	DATE	DESCRIPTION

4/4/2023

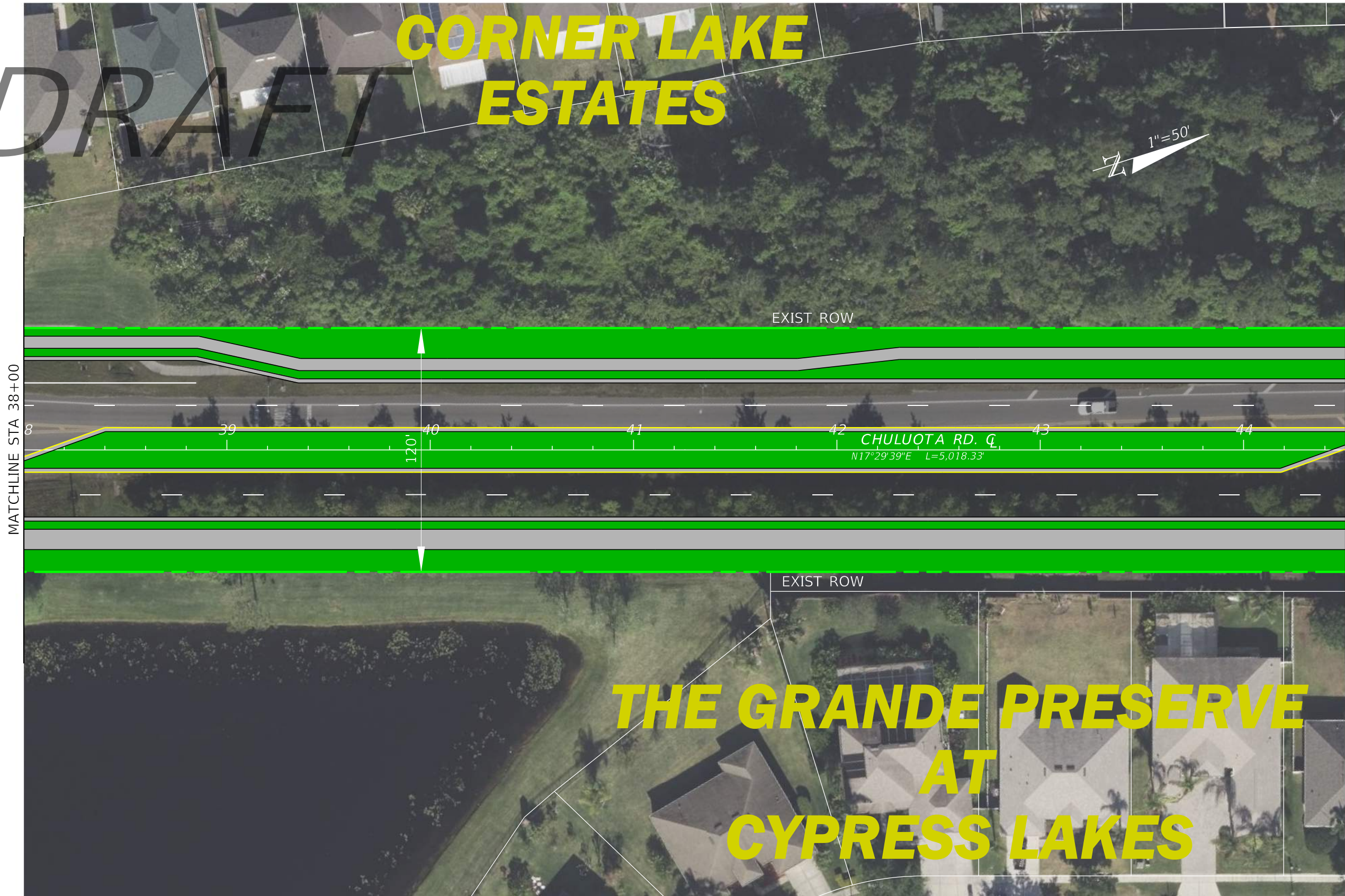
ORANGE COUNTY PUBLIC WORKS		
ROAD NO.	COUNTY	FINANCIAL PROJECT ID

**CHULUOTA RD (CR 419)
 PROPOSED PREFERRED
 ALIGNMENT**

SHEET NO.
5

DRAFT

CORNER LAKE ESTATES

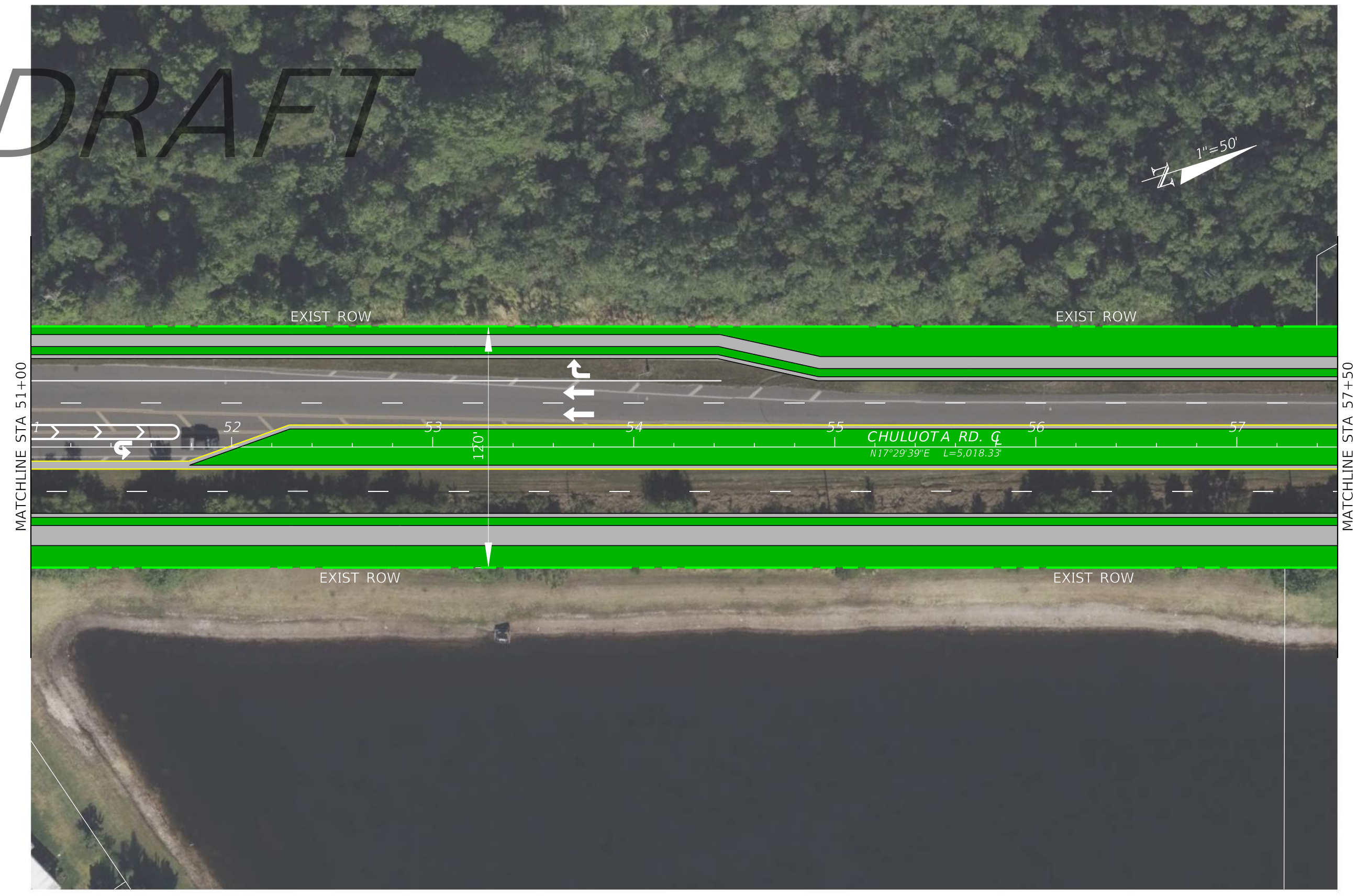
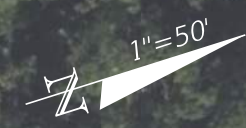


THE GRANDE PRESERVE AT CYPRESS LAKES

4/4/2023 2:45:30 PM salanis c:\pwworking\jmi\40336928\GEOMETRY_Pref-ALT-2L.dgn

REVISIONS				ORANGE COUNTY PUBLIC WORKS			CHULUOTA RD (CR 419) PROPOSED PREFERRED ALIGNMENT	SHEET NO.
DATE	DESCRIPTION	DATE	DESCRIPTION	ROAD NO.	COUNTY	FINANCIAL PROJECT ID		6
		4/4/2023						

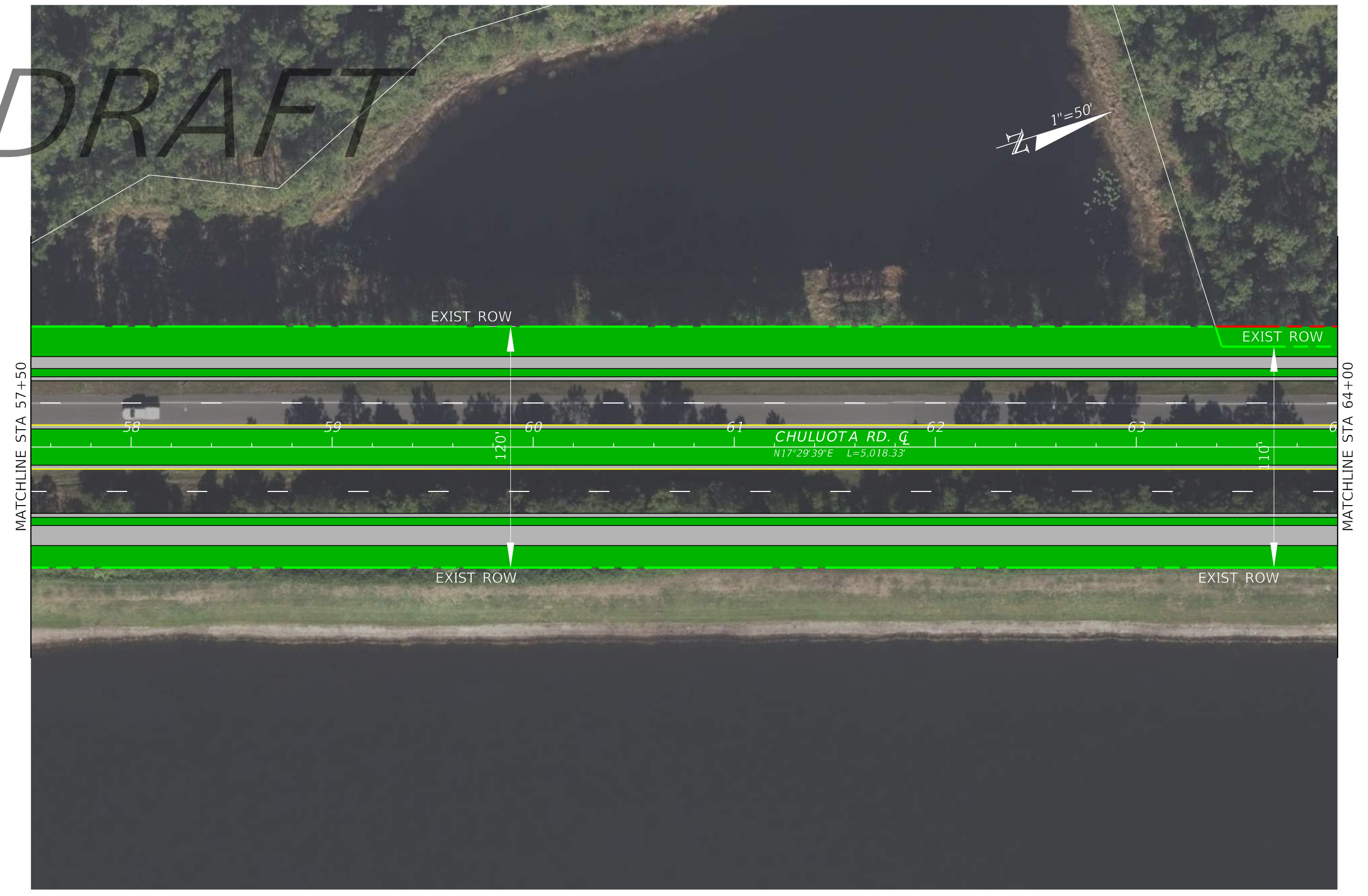
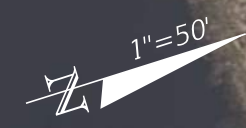
DRAFT



4/4/2023 2:45:37 PM salanis
 c:\pwworking\jmi\40336928\GEOMETRY_Pref-ALT-2L.dgn

REVISIONS		DATE	DESCRIPTION	ORANGE COUNTY PUBLIC WORKS	CHULUOTA RD (CR 419) PROPOSED PREFERRED ALIGNMENT	SHEET NO.
DATE	DESCRIPTION					
		4/4/2023		ROAD NO. COUNTY FINANCIAL PROJECT ID		8

DRAFT



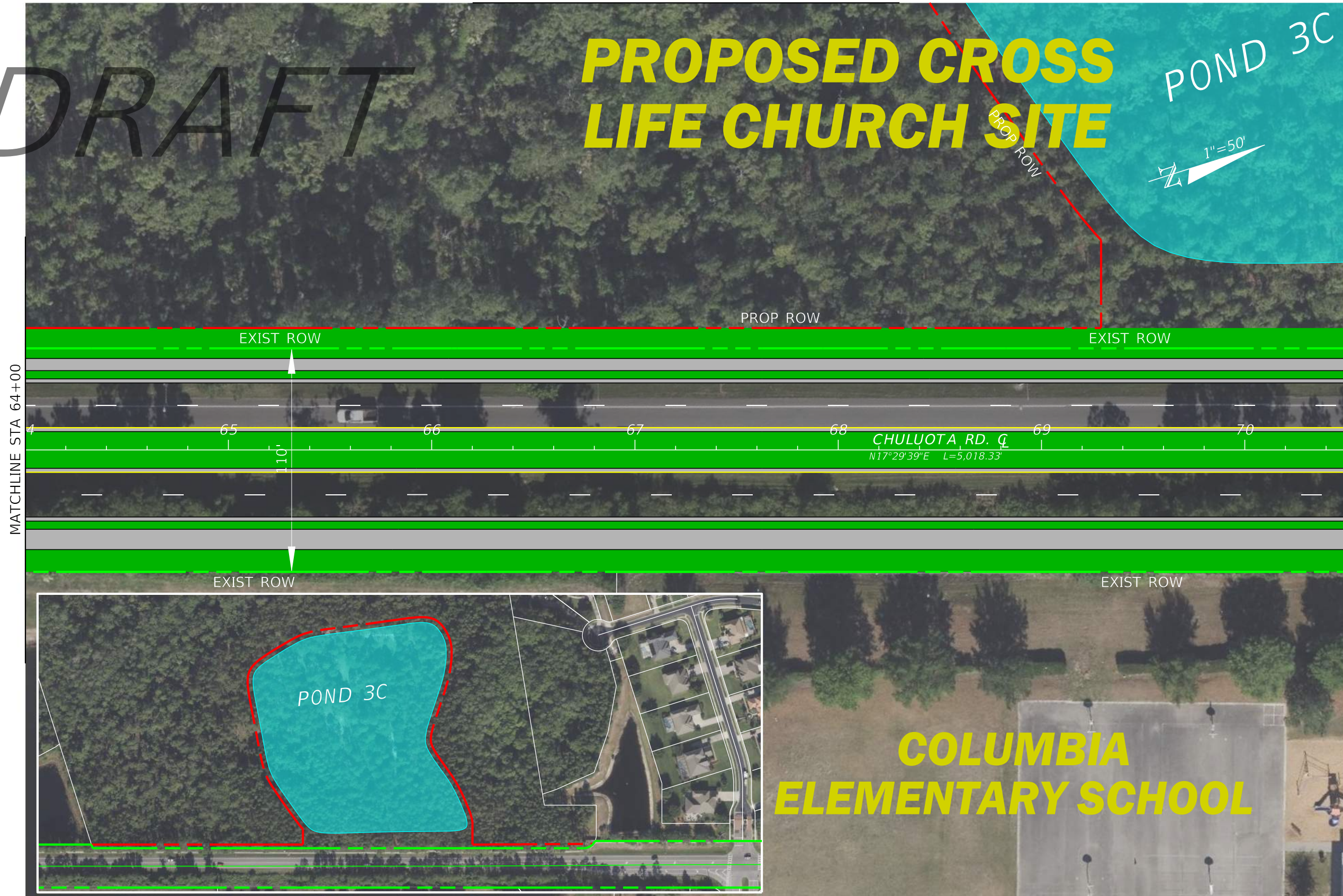
4/4/2023 2:45:40 PM salanis c:\pwworking\jml\40336928\GEOMETRY_Pref-ALT-2L.dgn

REVISIONS		DATE	DESCRIPTION	ORANGE COUNTY PUBLIC WORKS	ROAD NO.	COUNTY	FINANCIAL PROJECT ID	CHULUOTA RD (CR 419) PROPOSED PREFERRED ALIGNMENT	SHEET NO.
DATE	DESCRIPTION								9
		4/4/2023							

DRAFT

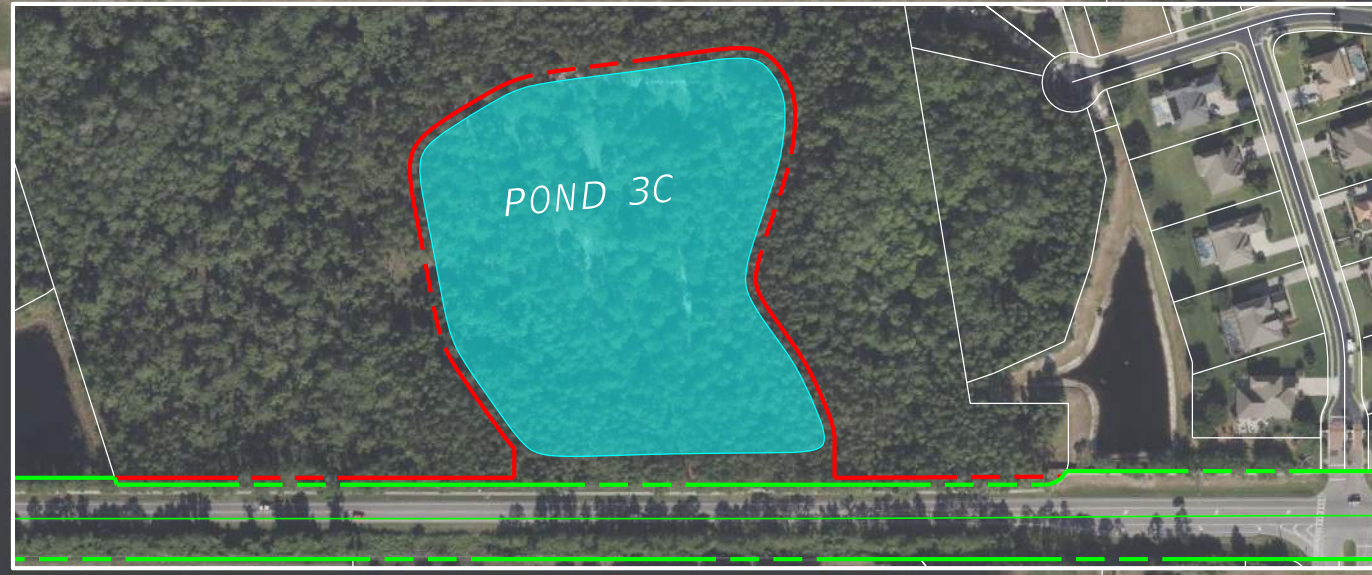
**PROPOSED CROSS
LIFE CHURCH SITE**

POND 3C
1"=50'



MATCHLINE STA 64+00

MATCHLINE STA 70+50

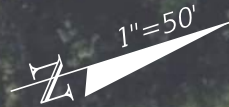


**COLUMBIA
ELEMENTARY SCHOOL**

4/4/2023 2:44:10 PM salanis c:\pwworking\jml\40336928\GEOMETRY_Pref-ALT-2L.dgn

REVISIONS				DATE	ORANGE COUNTY PUBLIC WORKS			SHEET NO.
DATE	DESCRIPTION	DATE	DESCRIPTION		ROAD NO.	COUNTY	FINANCIAL PROJECT ID	
				4/4/2023				CHULUOTA RD (CR 419) PROPOSED PREFERRED ALIGNMENT
								10

DRAFT



POND 3C

PROPOSED CROSS LIFE CHURCH SITE



MATCHLINE TO SHEET 10 & 11

ALL TANGENT LENGTHS ARE FROM PT TO PC.

4/4/2023 2:44:21 PM salanis c:\pwworking\jmn\40336928\GEOMETRY_Pref-ALT-2L.dgn

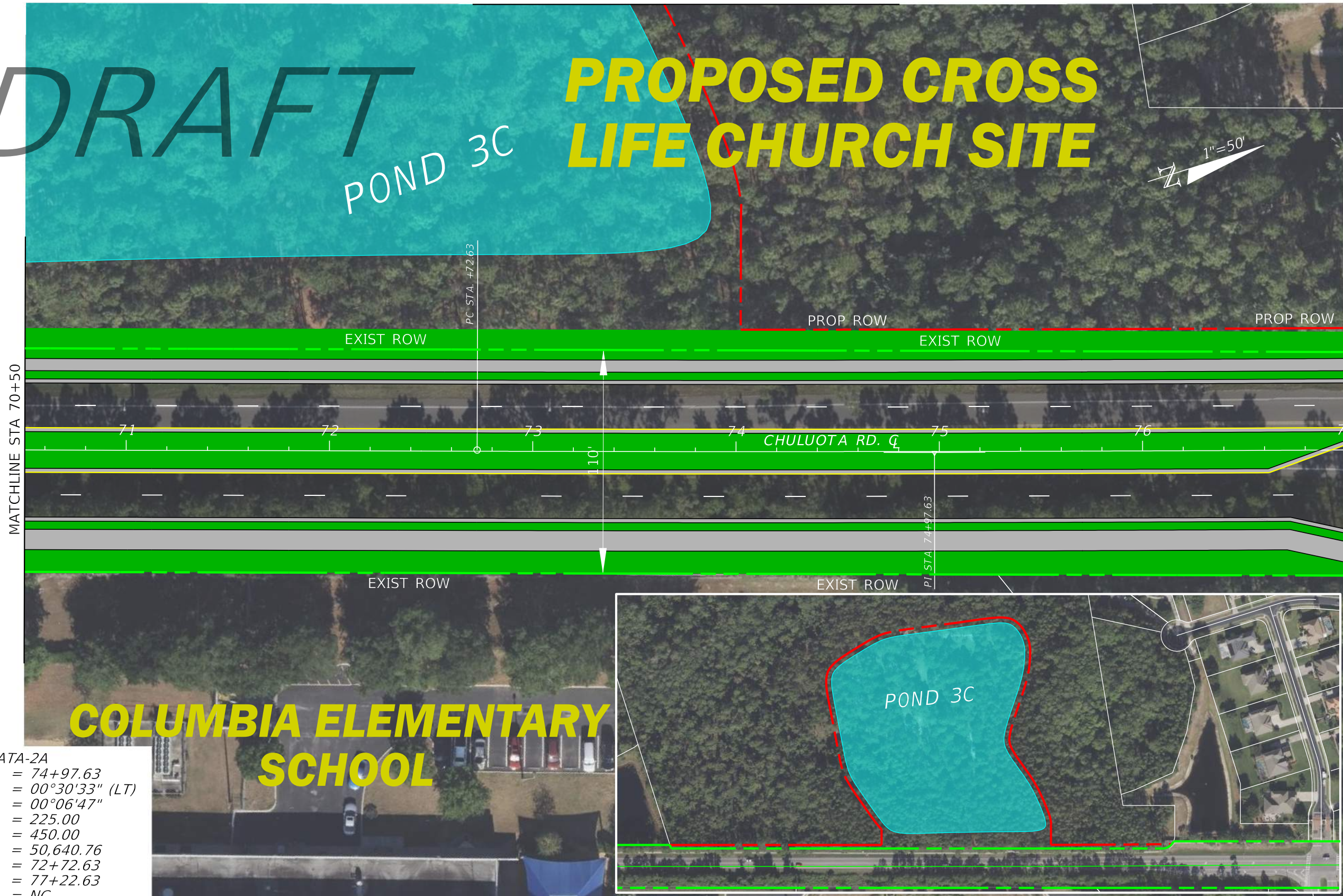
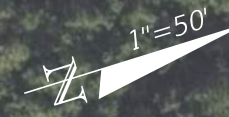
REVISIONS				ORANGE COUNTY PUBLIC WORKS		CHULUOTA RD (CR 419) PROPOSED PREFERRED ALIGNMENT	SHEET NO.
DATE	DESCRIPTION	DATE	DESCRIPTION	ROAD NO.	COUNTY		FINANCIAL PROJECT ID
				4/4/2023			

MATCHLINE TO SHEET 10A

DRAFT

POND 3C

**PROPOSED CROSS
LIFE CHURCH SITE**



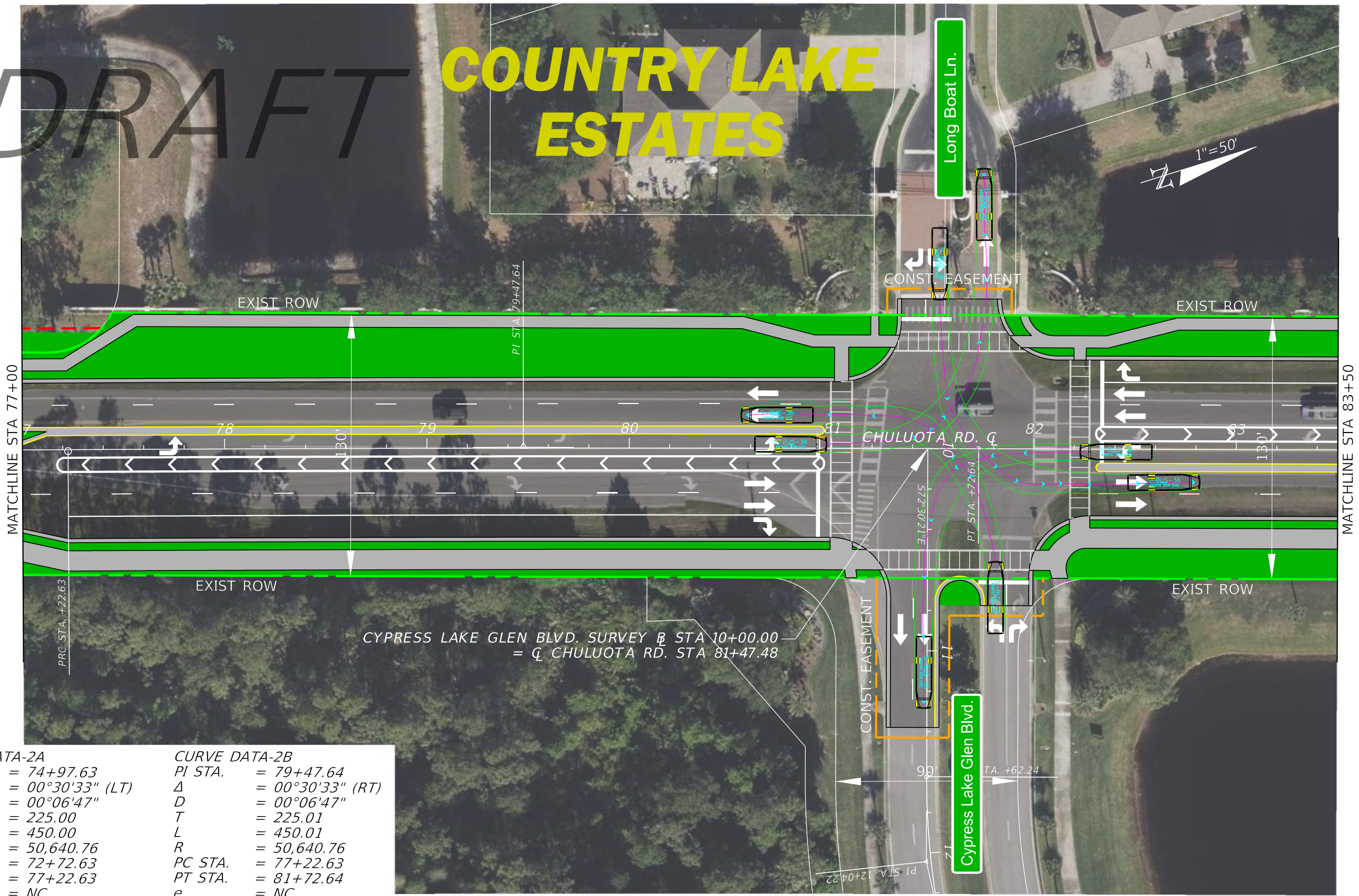
CURVE DATA-2A
 PI STA. = 74+97.63
 Δ = 00°30'33" (LT)
 D = 00°06'47"
 T = 225.00
 L = 450.00
 R = 50,640.76
 PC STA. = 72+72.63
 PT STA. = 77+22.63
 e = NC
 DESIGN SPEED = 45MPH

4/4/2023 2:44:26 PM salanis c:\pwworking\jml\40336928\GEOMETRY_Pref-ALT-2L.dgn

REVISIONS		DATE	DESCRIPTION	4/4/2023	ORANGE COUNTY PUBLIC WORKS			CHULUOTA RD (CR 419) PROPOSED PREFERRED ALIGNMENT	SHEET NO. 11
DATE	DESCRIPTION				ROAD NO.	COUNTY	FINANCIAL PROJECT ID		

DRAFT

COUNTRY LAKE ESTATES



CYPRESS LAKE GLEN BLVD. SURVEY @ STA 10+00.00
= Q CHULUOTA RD. STA 81+47.48

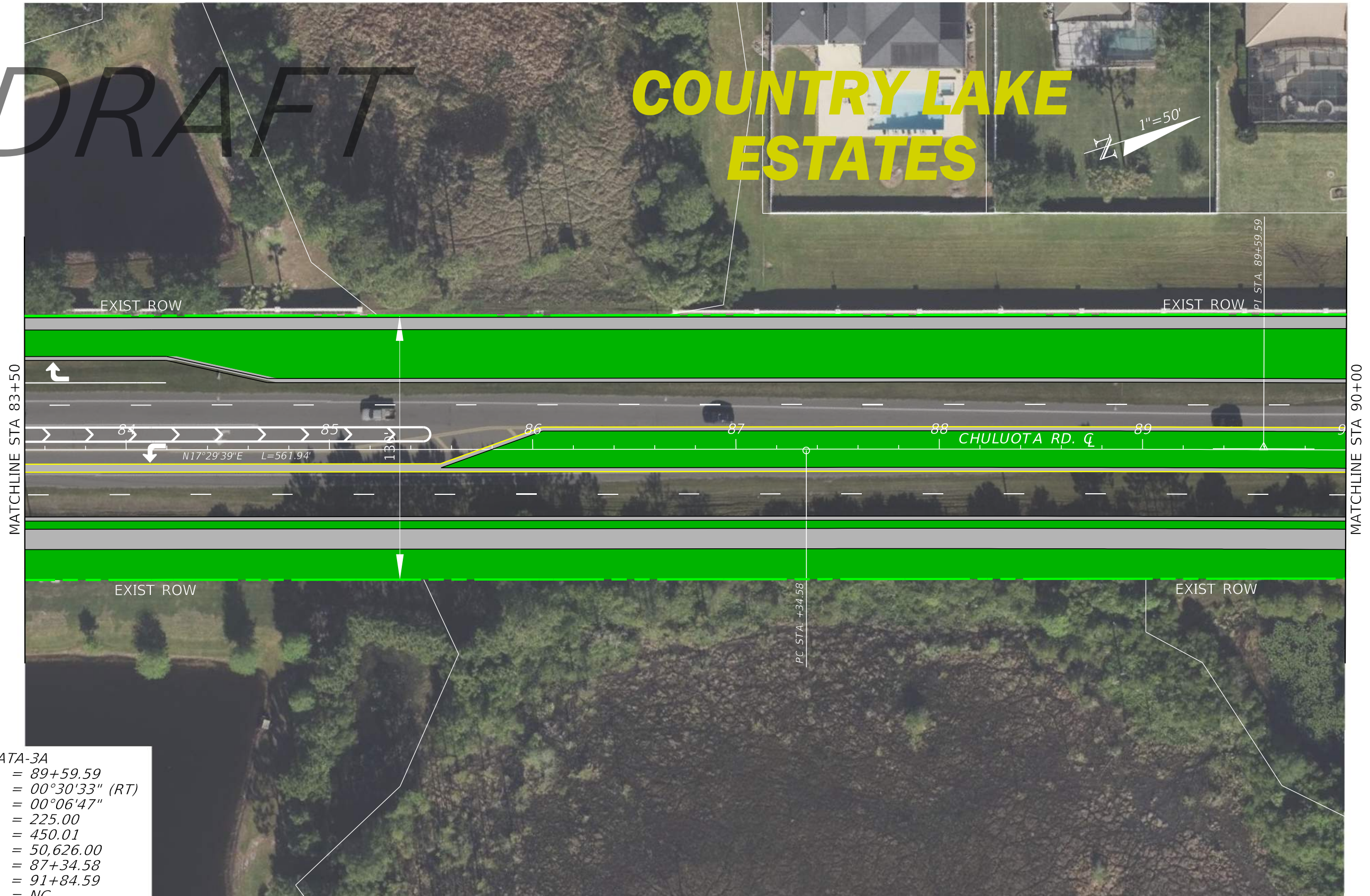
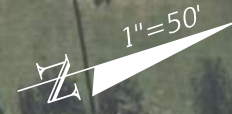
CURVE DATA-2A		CURVE DATA-2B	
PI STA.	= 74+97.63	PI STA.	= 79+47.64
Δ	= 00°30'33" (LT)	Δ	= 00°30'33" (RT)
D	= 00°06'47"	D	= 00°06'47"
T	= 225.00	T	= 225.01
L	= 450.00	L	= 450.01
R	= 50,640.76	R	= 50,640.76
PC STA.	= 72+72.63	PC STA.	= 77+22.63
PT STA.	= 77+22.63	PT STA.	= 81+72.64
e	= NC	e	= NC
DESIGN SPEED	= 45MPH	DESIGN SPEED	= 45MPH

4/4/2023 2:44:39 PM salanis c:\pwworking\jml\0336928\GEOMETRY_Pref-ALT-2L.dgn

REVISIONS				4/4/2023	ORANGE COUNTY PUBLIC WORKS			CHULUOTA RD (CR 419) PROPOSED PREFERRED ALIGNMENT	SHEET NO. 12
DATE	DESCRIPTION	DATE	DESCRIPTION		ROAD NO.	COUNTY	FINANCIAL PROJECT ID		

DRAFT

COUNTRY LAKE ESTATES

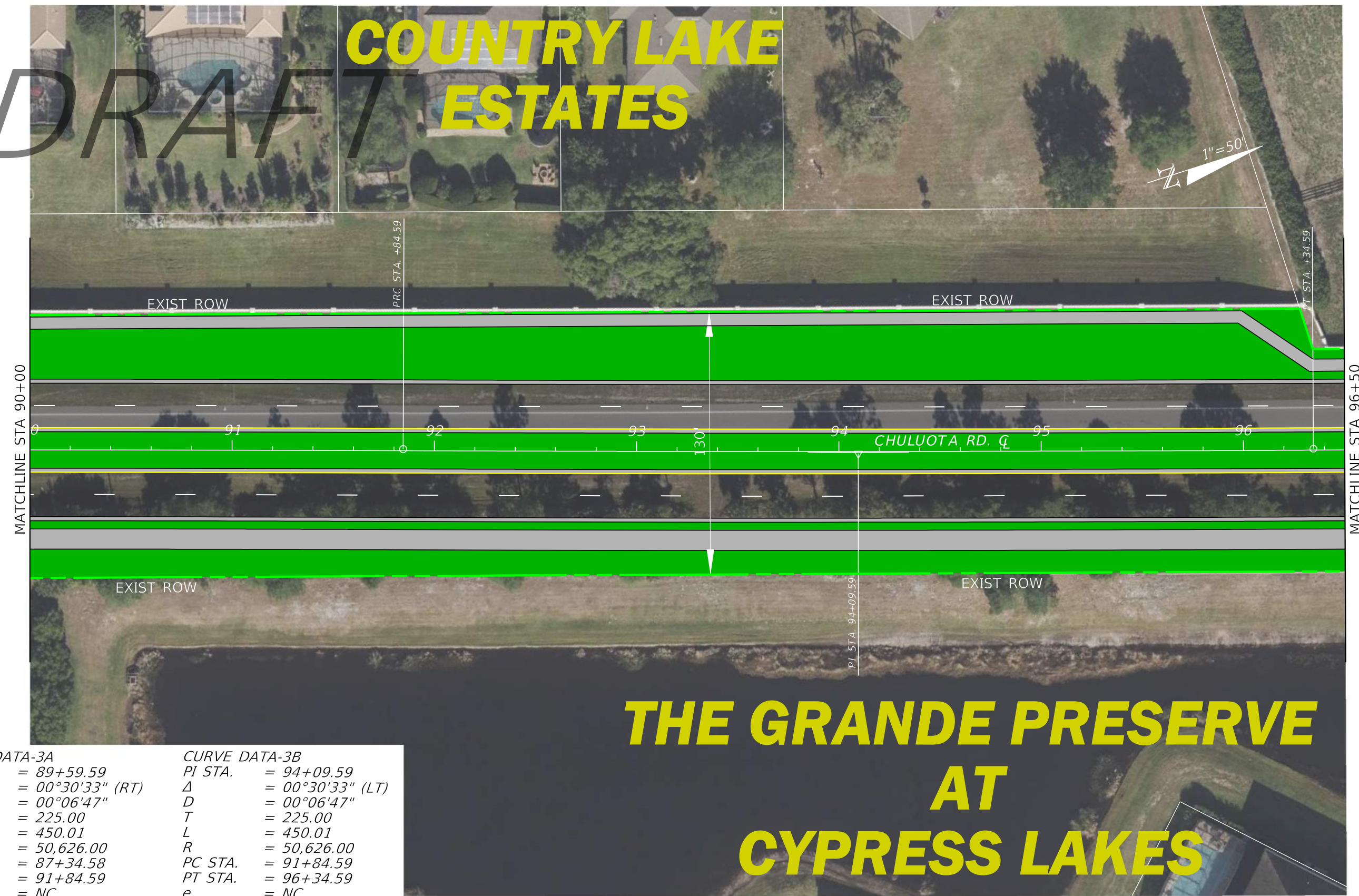


CURVE DATA-3A
 PI STA. = 89+59.59
 Δ = 00°30'33" (RT)
 D = 00°06'47"
 T = 225.00
 L = 450.01
 R = 50,626.00
 PC STA. = 87+34.58
 PT STA. = 91+84.59
 e = NC
 DESIGN SPEED = 45MPH

4/4/2023 2:44:42 PM salanis c:\pwworking\jml\40336928\GEOMETRY_Pref-ALT-2L.dgn

REVISIONS				DATE	ORANGE COUNTY PUBLIC WORKS			CHULUOTA RD (CR 419) PROPOSED PREFERRED ALIGNMENT	SHEET NO. 13
DATE	DESCRIPTION	DATE	DESCRIPTION		ROAD NO.	COUNTY	FINANCIAL PROJECT ID		
				4/4/2023					

DRAFT COUNTRY LAKE ESTATES



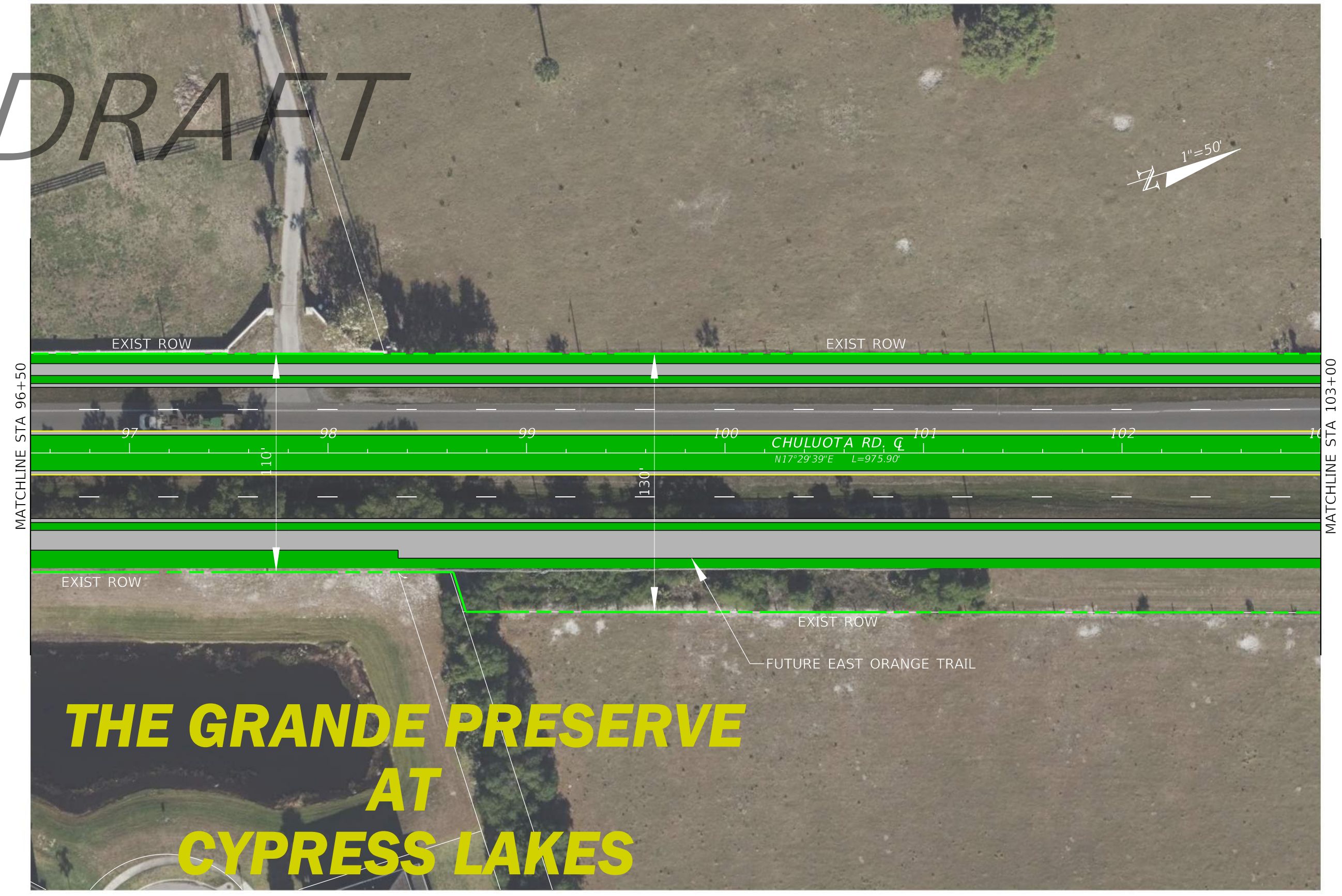
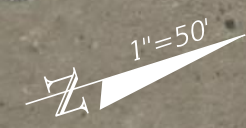
THE GRANDE PRESERVE AT CYPRESS LAKES

CURVE DATA-3A		CURVE DATA-3B	
PI STA.	= 89+59.59	PI STA.	= 94+09.59
Δ	= 00°30'33" (RT)	Δ	= 00°30'33" (LT)
D	= 00°06'47"	D	= 00°06'47"
T	= 225.00	T	= 225.00
L	= 450.01	L	= 450.01
R	= 50,626.00	R	= 50,626.00
PC STA.	= 87+34.58	PC STA.	= 91+84.59
PT STA.	= 91+84.59	PT STA.	= 96+34.59
e	= NC	e	= NC
DESIGN SPEED	= 45MPH	DESIGN SPEED	= 45MPH

4/4/2023 2:44:45 PM salanis c:\pwworking\jml\0336928\GEOMETRY_Pref-ALT-2L.dgn

REVISIONS				4/4/2023	ORANGE COUNTY PUBLIC WORKS			CHULUOTA RD (CR 419) PROPOSED PREFERRED ALIGNMENT	SHEET NO. 14
DATE	DESCRIPTION	DATE	DESCRIPTION		ROAD NO.	COUNTY	FINANCIAL PROJECT ID		

DRAFT

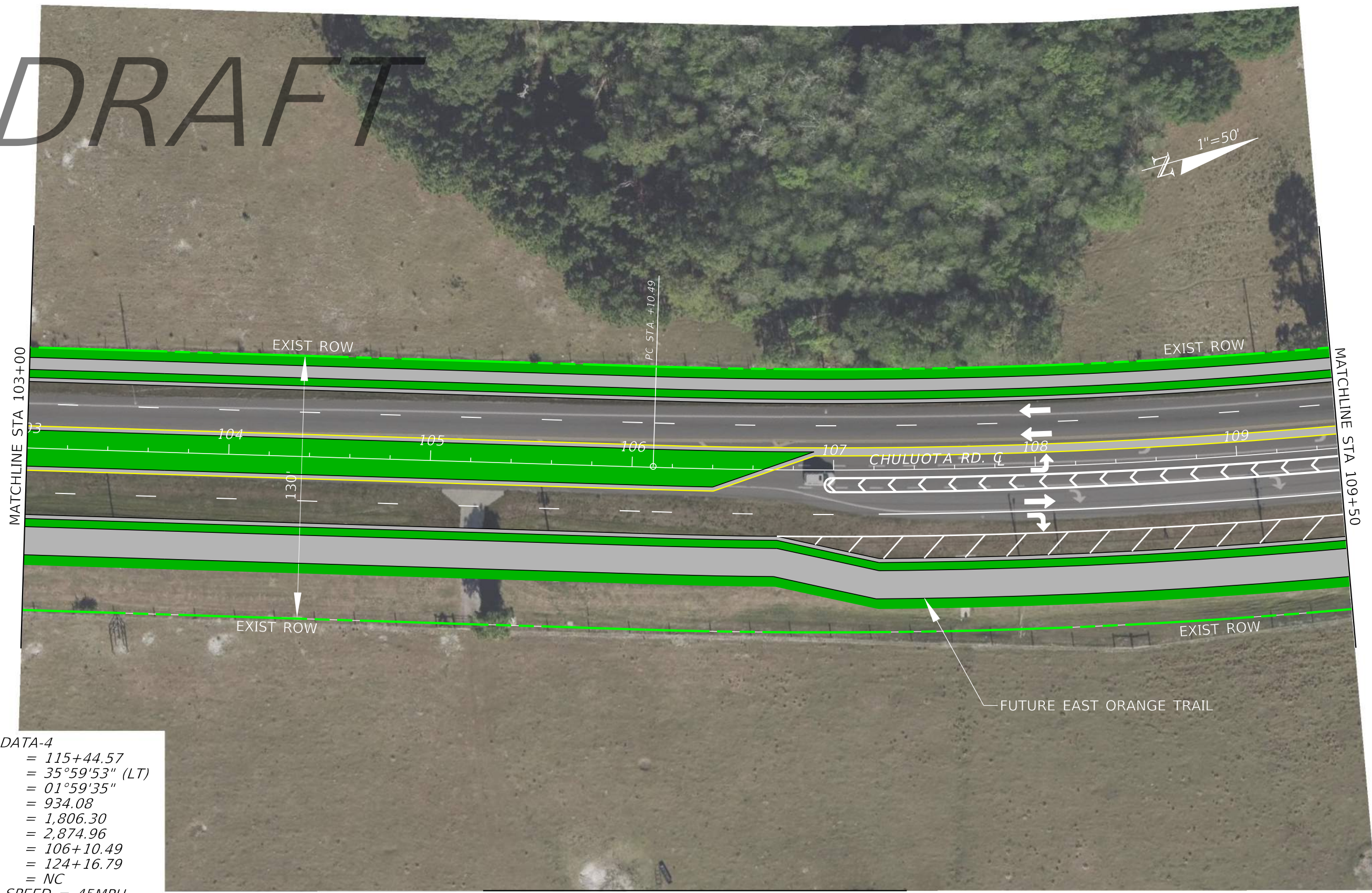
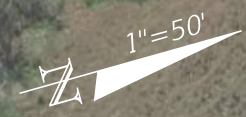


THE GRANDE PRESERVE AT CYPRESS LAKES

4/4/2023 2:44:48 PM salanis c:\pwworking\jmi\40336928\GEOMETRY_Pref-ALT-2L.dgn

REVISIONS		DATE	DESCRIPTION	ORANGE COUNTY PUBLIC WORKS	CHULUOTA RD (CR 419) PROPOSED PREFERRED ALIGNMENT	SHEET NO.
DATE	DESCRIPTION					
		4/4/2023		ROAD NO. COUNTY FINANCIAL PROJECT ID		15

DRAFT



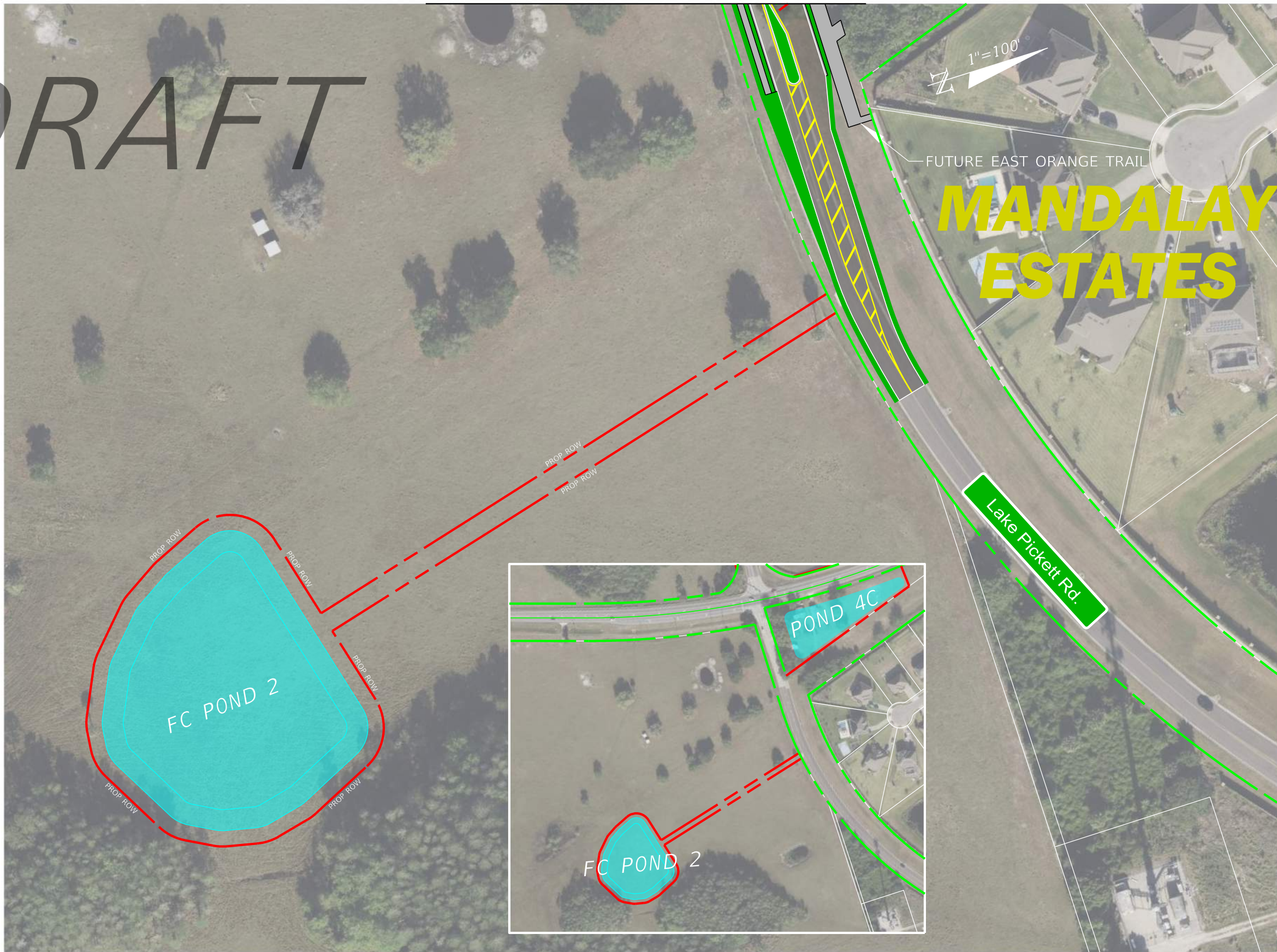
CURVE DATA-4
 PI STA. = 115+44.57
 Δ = 35°59'53" (LT)
 D = 01°59'35"
 T = 934.08
 L = 1,806.30
 R = 2,874.96
 PC STA. = 106+10.49
 PT STA. = 124+16.79
 e = NC
 DESIGN SPEED = 45MPH

MATCHLINE TO SHEET 19

4/4/2023 2:44:50 PM salanis c:\pwworking\jml\00336928\GEOMETRY_Pref-ALT-2L.dgn

REVISIONS				4/4/2023	ORANGE COUNTY PUBLIC WORKS			CHULUOTA RD (CR 419) PROPOSED PREFERRED ALIGNMENT	SHEET NO.
DATE	DESCRIPTION	DATE	DESCRIPTION		ROAD NO.	COUNTY	FINANCIAL PROJECT ID		16

DRAFT



4/4/2023 3:06:08 PM salanis
 c:\pwworking\jmi\40336928\GEOMETRY_Pref-ALT-2L.dgn

REVISIONS	
DATE	DESCRIPTION

4/4/2023

ORANGE COUNTY PUBLIC WORKS		
ROAD NO.	COUNTY	FINANCIAL PROJECT ID

CHULUOTA RD (CR 419) PROPOSED PREFERRED ALIGNMENT

SHEET NO.
19